

Focus On a New Era



ASL

A S A L A S E R

Research and Therapeutic Solutions

WE FOCUS ATTENTION ON THIS AREA.

Temporomandibular Disorders (TMD) and craniofacial disorders involve the muscles of mastication, the temporomandibular joint and the associated structures. The stomatognathic system is composed of numerous muscles that connect it to the spine, the shoulder girdle and the other upper limbs: the irregular contraction of these muscles has repercussions on the other areas, creating tension on the muscles that are part of the functional chain with resulting neck and posture problems. Today these disturbances are on the rise and, in addition to causing pain, they also strongly affect the patient's working and social life.



“MLS Laser Therapy completely transformed the way we treat patients and elevated our quality of care.”



DR. STEVE OLMOS
DDS, DABCP-CDSM, DABDSM,
DAAAPM, FIAO, FAAOP, FAACP, FICCMO, FADI
Adjunct Professor, University of
Tennessee-Memphis

A New Technique

This is Mphi D

Work following
the Protocols

The Result
has been Shown



ASL
A S A L A S E R
Research and Therapeutic Solutions

MLS® LASER THERAPY: AN INNOVATIVE TECHNIQUE THAT OPENS NEW HORIZONS.

MLS® (Multiwave Locked System) Laser Therapy, an important goal in ASA laser scientific research, decisively accelerates relief of the symptoms caused by temporomandibular pathologies. This technique exceeds the limits of physical therapy and traditional Laser Therapy, guaranteeing short treatment times that are effective from the first treatments and long-lasting results. Based on combined and synchronized emission with overlapping, the advantages of continuous/frequency and pulsed emission can be used simultaneously and in complete safety.

A New Technique

ADVANTAGES

Notable reduction of symptoms right from the first sessions. Reduced treatment times, long lasting results

THERAPEUTIC EFFECT

The marked analgesic effect and the intense anti-inflammatory and anti-edema effects of the MLS® pulse are shown simultaneously strengthening one another

905 nm PULSED EMISSIONS

The pulsed mode particularly enhances the analgesic effect

MLS® PULSE

The wavelengths chosen ensure the laser's energy penetrates deeply

808 nm CONTINUOUS EMISSIONS

The continuous mode particularly enhances the anti-inflammatory and anti-edema effects

COMBINATION SYNCHRONIZATION

The synchronization in one single pulse of specific continuous and pulsed emissions, produces the synergy and strengthening of the single effects

MLS®
Multiwave
LockedSystem

MLS® WORKS WITH PERFECT SYNCHRONIZATION.

MLS® (Multiwave Locked System) combines and synchronizes specific continuous and pulsed emissions with different wavelengths. This synchronization is produced thanks to a patented control system (Multiwave Locked System), which allows modulation of emission type according to requirements. The laser's energy, synchronized and controlled in this way reaches deep into the tissue to create a more powerful therapeutic anti-inflammatory, anti-edema and analgesic effect speeding up the healing process at the same time.

"We use the MLS Laser Therapy to treat TMD problems, treat the inflammation that chronic pain patients always have. Also it is great for treating muscle tension problems."



DR. TERRY R. BENNETT

DMD Tulsa Orofacial Pain & Sleep Disorders Clinic, Tulsa, OK. Board-certified in Craniofacial Pain, Dental Sleep Medicine, and Craniofacial Dental Sleep Medicine.

AN OPTIMAL AND HOMOGENEOUS DISTRIBUTION OF ENERGY.

The synchronized, specific action of MLS® Laser Therapy, produces a refined and complex light pulse, able to transfer light energy more efficiently to the anatomical structures to which the therapy is directed in comparison with traditional laser emissions. By using combined and synchronized emissions with overlapping, the distribution of energy into the tissues becomes more homogenous. Thanks to the Target Area defined by the handpiece (excellent even for treating trigger and tender points), the supplied energy, which activates the photoreceptors in the treated area, covers a relatively large volume of tissue.



FOR TREATING THESE PATHOLOGIES.

▶ Temporomandibular Disorders and Craniofacial Pain.

MLS® Laser Therapy is useful for treating:

- ▷ inflammation that is common in patients with chronic pain
- ▷ muscular tension problems resulting from procedures that cause inflammation (extractions, root canal work, dental implants, interventions on soft tissue, etc.)
- ▷ post-surgery pain after interventions for inserting dental implants; healing is also promoted (and as a result less analgesics need to be taken)
- ▷ muscles, in order to favor relaxation before bite registration
- ▷ trigeminal neuralgia.

**Mphi D: SIMPLICITY, FUNCTIONALITY,
FLEXIBILITY, PRECISION.**

Thanks to the Mphi D device, you can use all the advantages of MLS® Laser Therapy in your work, easily reaching the areas to be treated. It's ergonomic handpiece, ideal for spot-treating or overall scanning, has been designed to guarantee maximum performance over time. Compact in size and lightweight, it comes equipped with a battery so that it may be used outside, without an electric cable. The lens of the handpiece covers a Target Area of 2 cm diameter, making it easier to activate the photoreceptors of the area treated and involving at the same time, a large area of the underlying tissue.



Thanks to the interchangeable head of the handpiece, the standard lens (Target Area of 2 cm diameter) may be quickly and easily removed and replaced with highly efficient guide lights which are able to direct the laser's rays towards much smaller spots to carry out specific treatments for oral conditions and for laser puncture. The curved guide light is particularly suitable for conditions such as gingivitis and stomatitis.



Mphi D

This is Mphi D



CHARLIE

To obtain the best possible Laser Therapy efficiency, complete your Mphi D with Charlie multidiodic applicator. This applicator can cover a Target Area of 5 cm in diameter, making it easier to treat large areas of the body, promoting the myorelaxation of the surrounding zones and reducing treatment times. Multidiodic applicator Charlie allows to work without requiring the constant assistance of an operator.

Mphi D 5



SOFTWARE

Characterized by an advanced user interface equipped with backlit color touch-screen graphic display, the software offers specific protocols for treating craniofacial problems and intraoral pathologies. Studied to make your work simpler and more effective, it offers complete operation methods illustrated with anatomic images and treatment points.

TROLLEY

The ergonomic trolley on wheels with shock-absorbing covers, was designed to hold Mphi D and its accessories: complete with built-in wand holder and tool areas, the Trolley makes it easier to move the equipment around your clinic, so it is always near you and the area to be treated. Mphi D Trolley was thought for those who desire to unite the efficiency of MLS® Laser Therapy with easier use.



Mphi D

TECHNICAL CHARACTERISTICS

- ▶ Handpiece with optical group composed of MLS® source power up to 1,1 W - Peak Power 25 W Ø 2 cm Target Area highlighted by high-efficiency red lights LEDs
- ▶ Color touch screen display with anatomical images
- ▶ Simultaneous management of two independent channels
- ▶ 4 treatment modalities:
 - A) Temporomandibular Disorders Static Treatment
 - B) Temporomandibular Disorders Dinamic Treatment
 - C) Craniofacial Pain
 - D) Intraoral Diseases
- ▶ Possibility to customize every treatment parameters
- ▶ MLS® modulation in CPW and FPW mode (Synchronized emission of Continuous Pulsed Waves and Frequenced Pulsed Waves)
- ▶ Modulation frequency from 1 to 2000 Hz with 1 Hz steps
- ▶ Power level 25%, 50%, 75% and 100%
- ▶ Fixed duty cycle at 50% or variable
- ▶ Treatment duration from 1" to 99'59" with 1" steps
- ▶ Automatic calculation of the emitted energy according to the settled parameters

ALARMS AND SAFETY FEATURES

- ▶ Laser emission warning light
- ▶ Interlock
- ▶ Acoustic signal selectable by operator
- ▶ Date and time
- ▶ Password to operate the device
- ▶ Language option
- ▶ Ready to be connected to the remote Laser emission signaling device

INCLUDED ACCESSORIES

- ▶ N° 2 curved guide light for intraoral disease
- ▶ N° 2 Laser Safety Goggles
- ▶ Table handpiece holder
- ▶ Unit carrying case
- ▶ Shoulder strap for portable use

SIZE AND WEIGHT

- ▶ 36 X 28 X 10 cm; 3 Kg

POWER SUPPLY

- ▶ Lithium polymer battery
- ▶ External power supply 18Vdc 50VA

OPTIONAL ACCESSORIES

- ▶ Trolley-Unit carrying
- ▶ Multidiodic applicator Charlie with arm

Mphi D TROLLEY

TECHNICAL CHARACTERISTICS

- ▶ Handpiece with optical group composed of MLS® source power up to 1,1 W - Peak Power 25 W Ø 2 cm Target Area highlighted by high-efficiency red lights LEDs
- ▶ Color touch screen display with anatomical images
- ▶ Simultaneous management of two independent channels
- ▶ 4 treatment modalities:
 - A) Temporomandibular Disorders Static Treatment
 - B) Temporomandibular Disorders Dinamic Treatment
 - C) Craniofacial Pain
 - D) Intraoral Diseases
- ▶ Possibility to customize every treatment parameters
- ▶ MLS® modulation in CPW and FPW mode (Synchronized emission of Continuous Pulsed Waves and Frequenced Pulsed Waves)
- ▶ Modulation frequency from 1 to 2000 Hz with 1 Hz steps
- ▶ Power level 25%, 50%, 75% and 100%
- ▶ Fixed duty cycle at 50% or variable
- ▶ Treatment duration from 1" to 99'59" with 1" steps
- ▶ Automatic calculation of the emitted energy according to the settled parameters

ALARMS AND SAFETY FEATURES

- ▶ Laser emission warning light
- ▶ Interlock
- ▶ Acoustic signal selectable by operator
- ▶ Date and time
- ▶ Password to operate the device
- ▶ Language option
- ▶ Ready to be connected to the remote Laser emission signaling device

INCLUDED ACCESSORIES

- ▶ Trolley-Unit carrying
- ▶ N° 2 curved guide light for intraoral disease
- ▶ N° 2 Laser Safety Goggles
- ▶ Table handpiece holder
- ▶ Unit carrying case
- ▶ Shoulder strap for portable use

SIZE AND WEIGHT

- ▶ 63 x 54 x 85 cm; 25 Kg

POWER SUPPLY

- ▶ Lithium polymer battery
- ▶ External power supply 18Vdc 50VA

OPTIONAL ACCESSORIES

- ▶ Multidiodic applicator Charlie with arm

Mphi D 5

TECHNICAL CHARACTERISTICS

- ▶ Multidiodic applicator Charlie with optical group composed of 3 MLS® sources with power up to 3.3 W - Peak Power 3 x 25 W Ø 5 cm Target Area highlighted by high-efficiency red light LEDs
 - ▶ Handpiece with optical group composed of MLS® source power up to 1,1 W - Peak Power 25 W Ø 2 cm Target Area highlighted by high-efficiency red lights LEDs
 - ▶ Color touch screen display with anatomical images
 - ▶ Simultaneous management of two independent channels
 - ▶ 4 treatment modalities:
 - A) Temporomandibular Disorders Static Treatment
 - B) Temporomandibular Disorders Dinamic Treatment
 - C) Craniofacial Pain
 - D) Intraoral Diseases
 - ▶ Possibility to customize every treatment parameters
 - ▶ MLS® modulation in CPW and FPW mode (Synchronized emission of Continuous Pulsed Waves and Frequenced Pulsed Waves)
 - ▶ Modulation frequency from 1 to 2000 Hz with 1 Hz steps
 - ▶ Power level 25%, 50%, 75% and 100%
 - ▶ Fixed duty cycle at 50% or variable
 - ▶ Treatment duration from 1" to 99'59" with 1" steps
 - ▶ Automatic calculation of the emitted energy according to the settled parameters
- ### ALARMS AND SAFETY FEATURES
- ▶ Laser emission warning light
 - ▶ Interlock
 - ▶ Acoustic signal selectable by operator
 - ▶ Date and time
 - ▶ Password to operate the device
 - ▶ Language option
 - ▶ Ready to be connected to the remote Laser emission signaling device
- ### INCLUDED ACCESSORIES
- ▶ Trolley-Unit carrying with arm for Charlie
 - ▶ N° 2 curved guide light for intraoral disease
 - ▶ N° 2 Laser Safety Goggles
 - ▶ Table handpiece holder
 - ▶ Unit carrying case
 - ▶ Shoulder strap for portable use
- ### SIZE AND WEIGHT
- ▶ 63 x 54 x 85 cm; 25 Kg
- ### POWER SUPPLY
- ▶ Lithium polymer battery
 - ▶ External power supply 18Vdc 50VA
- ### OPTIONAL ACCESSORIES
- ▶ Multidiodic applicator Charlie with arm

TROLLEY

TECHNICAL CHARACTERISTICS

- ▶ Ergonomic trolley designed for holding Mphi D, with bumper-protected wheels, a built-in handpiece holder and two storage compartments

SIZE AND WEIGHT

- ▶ 63 x 54 x 85 cm; 17 kg

“The laser has impacted our practice significantly; some 80% of chronic pain patients are feeling the results right away.”



DR. RICHARD GOODFELLOW
TMJ and Sleep Therapy Centre of Toronto,
Woodbridge, ON.

“MLS Laser Therapy completely transformed the way we treat patients and elevated our quality of care.”



DRS. DANIEL KLAUER
TMJ and Sleep Therapy Centre of South Bend,
South Bend, IN.
American Board of Craniofacial Pain.

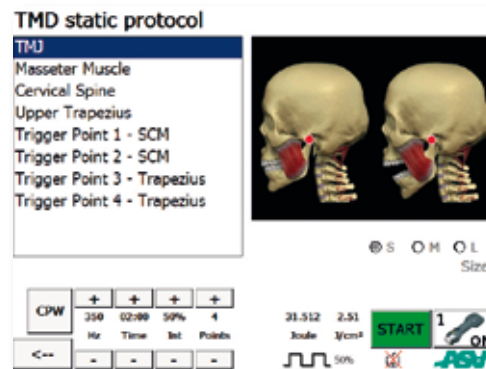
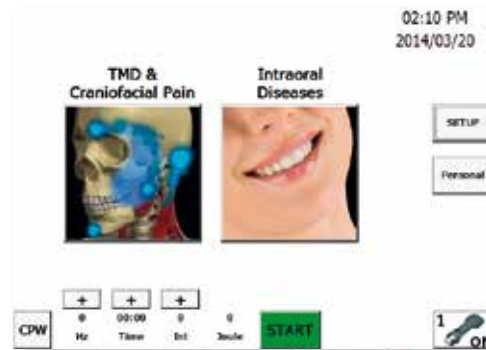
ASL

A S A L A S E R

Research and Therapeutic Solutions

LET YOURSELF BE GUIDED

The definition of specific therapy protocols (static and dynamic) simplifies your work and allows you to use the machine in a better way. The static protocol is applied to patients with acute pain and limited movement, while the dynamic protocol is ideal when the acute phase has been solved.



STATIC

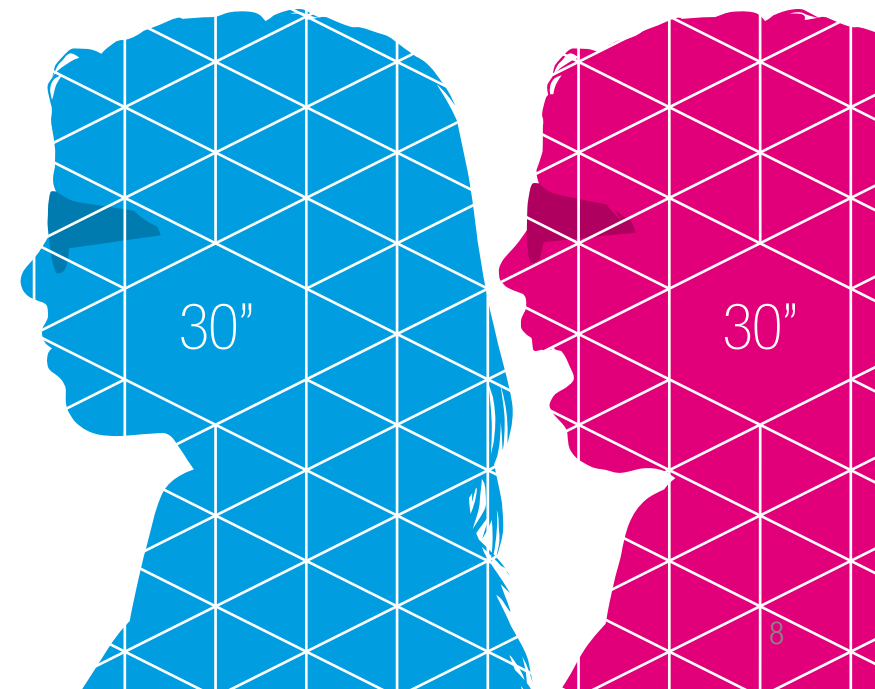
ACTION

▷ Decontracting, anti-inflammatory and analgesic effect

TREATMENT AREAS

- ▷ Muscular areas connected to TMJ
- ▷ Cervical spine
- ▷ Trapezius
- ▷ Trigger points

Work following
the Protocols



ADD TO YOUR LASER THERAPY MLS® SERVICES AND WORK BEST FOR THE HEALTH OF YOUR PATIENTS.

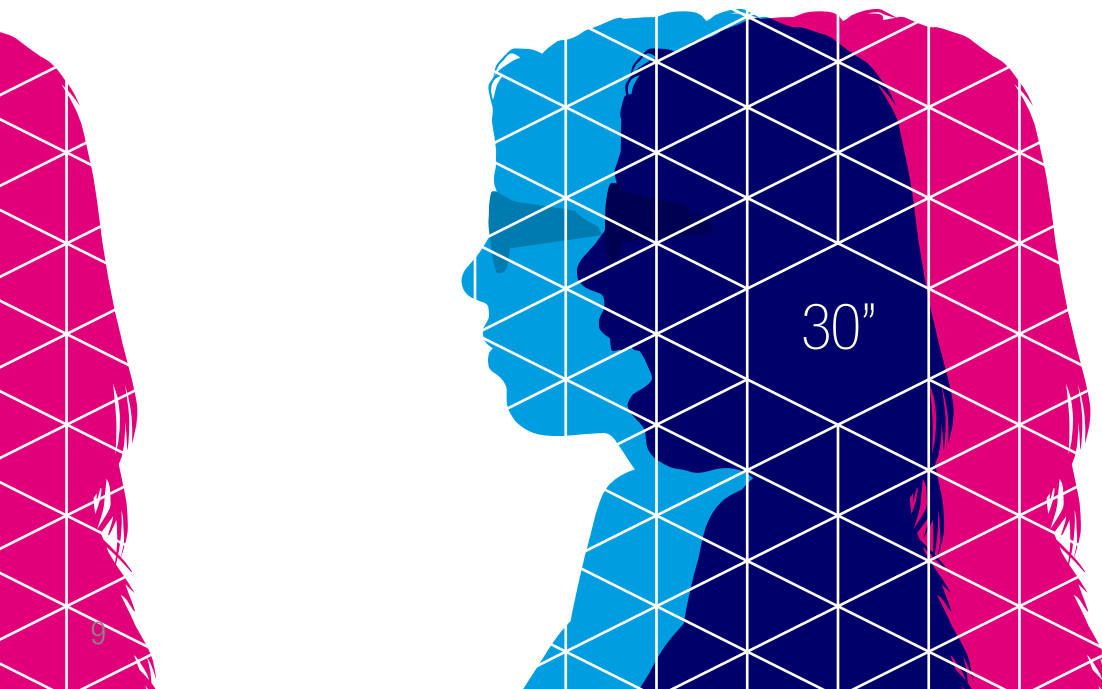
DYNAMIC

ACTION

- ▷ Decontracting, anti-inflammatory and analgesic effect
- ▷ Proprioceptive and joint recovery
- ▷ Faster postural correction of cranio-cervical-mandibular structures
- ▷ Breaking circular path of chronicity
- ▷ Allows a longer term result

TREATMENT AREAS

- ▷ TMJ: with protrusion, retrusion and lateral movement
- ▷ Cervical area during cervico-cranial rotation on the left and right, cervical flexion-extension and lateral flexion



THE “THANKS” OF ASALASER

We are the first to say “Thanks”. Thanks to our experience, that has grown daily since 1983. Thanks to the specialization that has allowed us to successfully develop therapy solutions for Pain Management and Tissue Repair. Thanks to our tireless research which has enabled ASAlaser to produce efficient medical equipment for Laser Therapy (Hilterapia® and MLS® Laser Therapy) and Magnetotherapy for use in the fields of Physiotherapy, Orthopaedics, Traumatology, Rheumatology, Dermatology, Sports medicine and Rehabilitative medicine.

“Especially we’ve seen good results in surgical patients after complex operations for bone augmentation and dental implants installation, edema and pain were decreased significantly!”



DR. VAFIN STANISLAV
Dentist, podiatrist, Bosco Clinica, Mosca.

THE “THANKS” OF THOSE WHO HAVE TRIED IT.*

“Compared to other lasers that I have used, the MLS Laser Therapy is definitely more versatile and effective.”



DR. EDMUND LIEM
Chilliwack, BC Canada.
Founder the Vancouver TMJ & Sleep Therapy Centre.

“The laser helps us to get more patients.”



DR. RONALD GOLDSTEIN
Mississauga, ON.

“Our patients LOVE the MLS laser!”



DR. DAVID SHIRAZI
DDS MS LAc MA FAACP D.ACSDD RPSGT,
TMJ Therapy and Sleep Center, Thousand Oaks, CA.

The Result
has been Shown

*NONE OF THE DOCTORS ON THIS PAGE HAVE RECEIVED ANY COMPENSATION IN EXCHANGE FOR THEIR TESTIMONIALS.

MLS® HAS BEEN SCIENTIFICALLY PROVEN. IN ASACAMPUS.

"I have been treating TMD for more than 16 years and haven't seen anything like it."



DR. JIM K. BECK

Dental degree from Creighton University.
Diplomate status from American Board of
Craniofacial Pain - Craniofacial Dental Sleep
Medicine DDS, TMJ-Sleep Colorado, Pueblo, CO.

"MLS Laser Therapy has allowed me to instantly get results when treating the patient. It has had a dramatic impact on my practice in the way we now look at different treatment modalities for our patients that have not been available to in the past."



DR. MARCUS BLACK

General and Restorative Dentist, Rogers, AR.
Doctorate in Dentistry from the University of
Missouri-Kansas City School of Dentistry
Member of The Academy of Laser Dentistry.

The efficiency and safety of MLS® Laser Therapy have been proved scientifically in ASAcampus, the Joint Laboratory at the Department of Experimental and Clinical Biomedical Sciences of the University of Florence - Italy directed by Dr. Monica Monici. Working closely with an international network of researchers, ASAcampus has allowed us to demonstrate the validity of our work by:

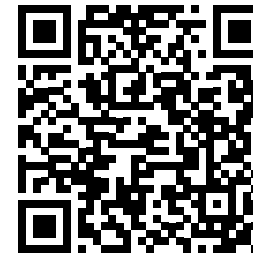
- ▷ extensively studying the photochemical, photothermal, photomechanical effects resulting from the interaction between MLS® impulse and biological tissue
- ▷ investigating, up to a molecular level, the mechanisms that are at the base of the biological reply
- ▷ evaluating the therapeutic effects.

"The participation of ASA in the Joint Laboratory with the University of Florence allows the transfer of research findings to clinical application."



DR. MONICA MONICI

Person in charge of ASAcampus, ASA Research
Division, Joint Laboratory Department of
Experimental and Clinical Biomedical Sciences,
University of Florence, Italy.



A S A L A S E R

Research and Therapeutic Solutions



ASA srl

Corporate Headquarters / Registered Office

Via Alessandro Volta, 9
36057 Arcugnano (VI) - Italy
asalaser@asalaser.com

t. +39 0444 28 92 00
f. +39 0444 28 90 80
www.asalaser.com

Research Division / Branch

Joint Laboratory
Department of Experimental
and Clinical Biomedical Sciences
University of Florence

Viale G. Pieraccini, 6
50139 Firenze - Italy
asacampus@asalaser.com

Follow us:



www.asalaser.com